

INJURIES IN GREY BRUCE: MOTOR VEHICLE COLLISIONS



Motor vehicle collisions are the second-greatest cause of unintentional injuries in Grey Bruce. On average, they cause 1,585 emergency department visits, 175 hospitalizations, and 16 deaths every year locally.

GREY BRUCE RATES HIGHER THAN ONTARIO RATES

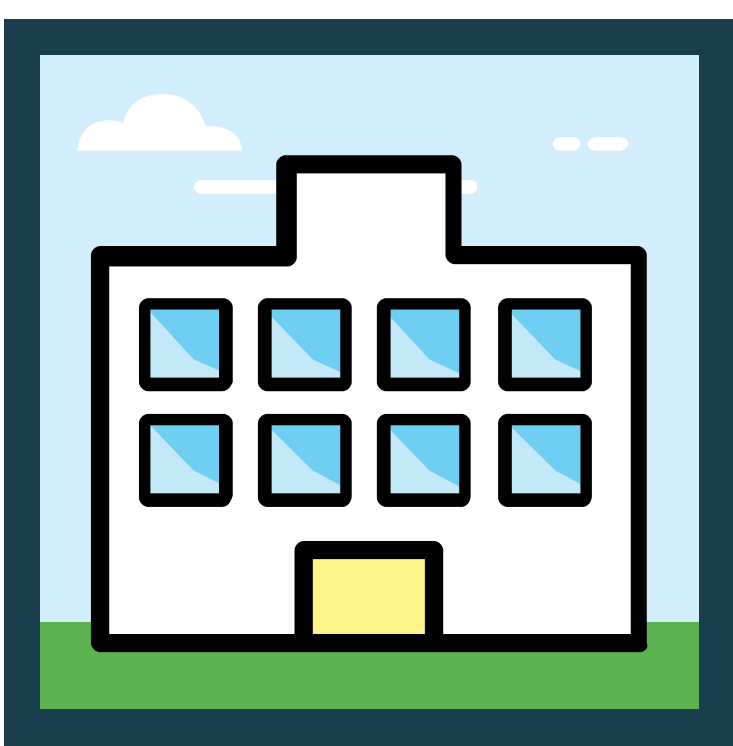
The local rate of emergency department (ED) visits for motor vehicle collisions is 68% higher than Ontario rate, and the hospitalization rate is twice as high as the Ontario rate.

ED VISITS



Rate **68%**
higher in
Grey Bruce

HOSPITALIZATIONS



Rate **2x** as
high in
Grey Bruce



YOUTH AT GREATEST RISK

Grey Bruce youth and young adults aged 15 to 24 are at greatest risk of being injured in a motor vehicle accident.

LOCAL INJURY RATES STABLE OVER TIME

The local rates of ED visits and hospitalizations for motor vehicle collisions are not significantly different than the 2003-2004 rates.



SOURCES:
Ambulatory Visits 2003–2016, Ontario Ministry of Health and Long-term Care, IntelliHEALTH Ontario, Date Extracted: November 26, 2018.
Ontario Mortality Data 2003–2015, Ontario Ministry of Health and Long-term Care, IntelliHEALTH Ontario, Date Extracted: February 5, 2019.

DATA NOTES: Rates refer to age-standardized rates. Averages refer to ten-year averages between 2007–2016 for ED visits and hospitalizations, and between 2006–2015 for deaths.